



*A Rich Past,
Present & Future*

NEWSLETTER

Friday 15th March, 2024

Term 1: Week 7



DIARY DATES

Monday 18th March

School Council Meeting
Naplan testing

Monday 25th March

Parent Helper session

Thursday 28th March

Last day of Term 1
Assembly & Easter Raffle
2.30pm dismissal

Friday 29th March

Good Friday

Monday 15th April

1st day of Term 2

Tuesday 23rd April

School photos

Thursday 25th April

Anzac Day
(Student free day)

Friday 26th April

Curriculum Day

Wednesday 1st May

Grade 6 Leadership Day



Principal's Report

Well done to our Grade 3's and 5's for their focus and great attitude to working their way through various NAPLAN tests this week. These tests are one set of data which is used to inform us of the students progress, alongside the assessments that we are consistently making throughout the school year. We have attempted to ensure that the environment has remained as normal and calm as possible this week for our students sitting the tests. Next week we have the opportunity to catch up any students who were absent during the tests.

EASTER RAFFLE

As is tradition at PHPS we will be finishing off our term with our Easter raffle. Our assembly will be held at **2:20pm for a 2:30pm dismissal**. We have a box out of the front of the office for donations—thankyou to those families who have donated goods.

All families should have received a little booklet of raffle tickets which can be handed into the office. We have extra/spare books for any families who would like additional tickets.

EASTER HUNT

To follow on from the Easter theme,our friends at the Panton Hill CFA have again offered to conduct an Easter Egg hunt at the Memorial Park following our final assembly at the end of the term. Perfect way to start the holidays with armfuls of chocolate! Please be aware that the students need to be accompanied to the park by an adult. If you have arranged for someone other than their normal parent/guardian to take them, please let us know via email. We will have staff on duty here at school for any students not attending and any students registered for Theircare will be supervised by Ella and Co.

Values Awards

Value Award Winners

Congratulations to:

Niki Kaefer

*Innovation
Determination
Enthusiasm*



585 Main Rd. Panton Hill – Ph: 9719 7202

www.pantonhill.vic.edu.au

PARENT HELPERS INFORMATION SESSION

Now that all of our students have settled into the school routine and are nearing the end of Term One, we are ready to welcome parents/guardians into the classrooms as parent helpers. We will be starting our parent helpers in Term Two.

We ask that if you are interested in coming along as a parent helper that you attend the Information session that I will be running on **Monday the 25th of March, straight after the assembly**. This presentation will go through what to expect as a parent helper and what the expectations will be of you.

Following the information session, you will be asked to sign our parent helpers agreement. On receipt of this, you will be good to go and the classroom teachers will establish a roster, based on parent interest. A notification will be coming out on Xuno closer to the session where you will have an opportunity to RSVP.

PHPS ARTWORKS

One of the things we often have comments on as I show people through the school is the beautiful artwork that our students create. We thought it might be nice to showcase this in our newsletters so this is the first of many. Shout out to Maddie Currie whose artwork of the owl we used for the banner.



Artwork by Otto and Edward

UNIFORM SHOP

For any families that have been waiting on short sleeve polos, stock has finally arrived!! The uniform shop is now fully stocked and open as needed. We also have our second hand cupboard, all items are \$2 and we are always grateful for any clean, good condition items.

LUNCH ORDERS

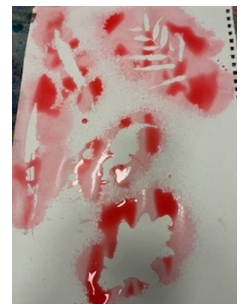
When placing a lunch order with the Smiths Gully store, it is important to enter your child's name (not parents) and their grade. It is very difficult for Lydia to sort the lunch orders into the classroom tubs without this information and requires her asking at the office for the details. The grade details are: **00B** for Miss Brindley, **00G** for Miss Grisold, **1/2T** for Mrs Thomson, **1/2P** for Mrs Puls– Welsh, **3/4** for Mrs Kane, **4/5** for Miss Payne and **5/6** for Mr Hurst. Also to avoid a last minute rush for the store, orders do need to be made by **11am**.



CAR PARK

It is imperative that parents, when using the school carpark, please be sure to back into a space. We also ask that you drive at walking pace and be aware of students exiting other cars. School Council will be discussing the situation with the car park on Monday at our next meeting.

TheirCare
where kids love to be!



Hello Everyone!

Last week, on Friday 8th of March, we had a fantastic Pupil Free Day! The children had a ball mixing lots of chocolate batter to fill the patty pans up for our delicious Tea Party. At the Tea Party they had fresh fruit, sandwiches and of course, the chocolate fairy cakes along with some very icy and cold cordial (sugar free).

This week our activities have centred around one of my favourite seasons, Autumn! There's just so much art work to be done with this. The colours of Autumn are fantastic!

A mixed media collage by one of our resident artists. Spray painting found leaves from the garden.

Next week we will be looking at Houses and the different types of dwellings that exist in the world.

Take Care, Ella from Their Care @ Panton Hill

Statement of Commitment PHPS is committed to Child Safety. We want children to be safe, happy and empowered. We support and respect children, as well as staff and volunteers.

PHPS Artworks



This week we have some of the work from Grade 1/2 who have been working on an exploration of patterns, using a variety of mediums such as food dye, texta and crayons.



Statement of Commitment PHPS is committed to Child Safety. We want children to be safe, happy and empowered. We support and respect children, as well as staff and volunteers.

Important Dates

Term dates

	Start date	Finish date
Term One	Mon 29th Jan—teachers Tuesday 30th Jan—Students	Thur 28th March (2:30pm)
Term Two	Monday 15th April	Friday 28th June (2:30pm)
Term Three	Monday 15th July	Friday 20th Sep (2:30pm)
Term Four	Monday 7th Oct	Friday 20th Dec—(1:30pm)

Public Holidays

Term One	Labour Day	Monday 11th March
Term One	Good Friday	Friday 29th March
Term Two	ANZAC Day	Thursday 25th April
Term Two	King's Birthday	Monday 10th June
Term Four	Melbourne Cup	Tuesday 5th November

Pupil Free Days

Term One	Curriculum Day	Monday 29th January
Term One	Curriculum Day	Friday 8th March
Term Two	Curriculum Day	Friday 26th April
Term Three	Professional Practice Day	Friday 16th August
Term Four	Curriculum Day	Monday 4th November

Other

Term Four	Grade 3-6 Camp	Monday 25th November—Wednesday 27th November
Term Four	Graduation	Monday 16th December
Term Four	School Concert	TBD

PHPS Easter RAFFLE

\$5 PER
BOOK
OR .50
CENTS A
TICKET

DONATION
BOX IS AT
THE
OFFICE



WE WILL BE HOLDING AN EASTER
RAFFLE TO BE DRAWN AT OUR ASSEMBLY
ON THE LAST DAY OF TERM 1

THURSDAY 28TH MARCH

Any donations would be greatly appreciated eg.

Eggs, craft, toys, books etc

Tickets will be sent home with students next week.

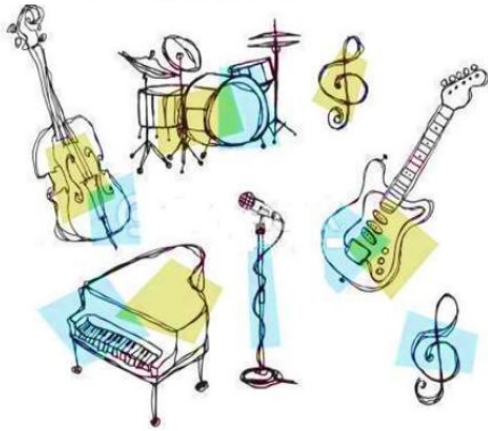
Extra books are available from the office.

LPC Music Australia

Learn, Play, Create.

Offering lessons in

- Guitar
- Ukulele
- Violin
- Piano
- Drums
- Singing



- Lessons at school during school hours.
- Teaching modern songs and traditional music theory.
- Private or group lessons.
- Band program.

To see which instruments are available at your school contact Ewan at lpcmusicaustralia@gmail.com or on 0408 197 884.

To enrol go to www.lpcmusicaustralia.com.au

PROUDLY RUN BY LOCAL POLICE & VOLUNTEERS

DIAMOND CREEK BLUE LIGHT DISCO

15TH MARCH 2024
7-9.30PM | 8 to 13 YEAR OLDS | \$8 ENTRY

Diamond Creek Community Centre
28 Main Hurstbridge Road, Diamond Creek

Contact: Snr Sergeant Wayne Spence 9438 8300
Please ensure children have an emergency number on them.

Diamond Creek Blue Light Disco
 DIAMOND CREEK BLUE LIGHT DISCO

Diamond Creek Rotary Club
 Da Vinci

\$8
PER BAG

APTEDS

APPLES FOR SALE

FRESH GALA APPLES ARE NOW AVAILABLE AT SCHOOL

RECOMMENDED TO KEEP IN YOUR FRIDGE FOR FRESHNESS

CALLING ALL 5-9 YEAR OLDS

Registrations are now open for Auskick at Panton Hill in 2024
Dates: Saturday April 20 – July 28
Time: 8.30 – 9.30am
Location: Panton Hill Oval
Want to try, but not sure?
Come and check it out on Saturday April 20, 8.30am.

Statement of Commitment PHPS is committed to Child Safety. We want children to be safe, happy and empowered. We support and respect children, as well as staff and volunteers.

STARTS 19 MAR

CIRCUIT CLASS (45mins)



Bring a partner
for some friendly
competition!

(not essential)

BOXING DRILLS
CORE & STRENGTH
ENDURANCE

KIDS
CORNER
WITH
ACTIVITIES

6:30^{PM}
TUES

\$20 adult

\$30 pair

\$15 12 - 17yrs

AT PANTON HILL HALL

580 Kangaroo Ground - St Andrews Road

BOOK hforhealth.com.au/pantonhill



DISCLAIMER: Panton Hill Primary School (PHPS) does not endorse any product or service advertised in this newsletter. PHPS takes no responsibility for the content of advertisements or the quality and reliability of products or services offered in the advertisements

Statement of Commitment PHPS is committed to Child Safety. We want children to be safe, happy and empowered. We support and respect children, as well as staff and volunteers.

The place to be
these holidays!

ART ATTACK

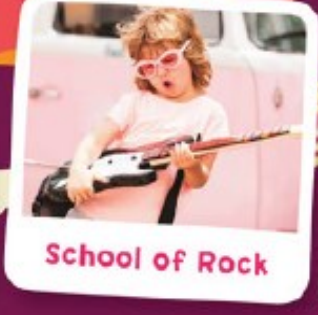
autumn
HOLIDAY
PROGRAM



Kung Fu Panda 4



Art Experience



School of Rock



Colour Run

Book now at theircare.com.au

Save up to 90% with the Child Care Subsidy

Holiday Program Important Information!

What to bring

- A healthy morning tea and lunch
- A labelled drink bottle for water
- Suitable clothing for an active day – closed toe shoes and jacket if wet/cold
- SunSmart hat for Spring and Summer holidays
- Medical Management Plan & Medication if applicable – see below for details



Don't forget!

- Keep your lunchbox nut-free to keep everyone safe
- Do not include food items that need to be reheated
- Label all items with child's name!
- Bus departure and arrival times are indicative only. For an accurate estimated time of arrival and departure please contact your service directly.



Personal belongings

Electronic devices, money and other valuables should be left at home.

If brought to the service, these items remain the responsibility of the family. TheirCare does not accept responsibility for loss or damage.



TheirCare provides

- Breakfast and afternoon tea snack
- Sunscreen
- Water to refill bottles



Child Care Subsidy

Please note that subsidised hours are calculated and allocated by Centrelink on a fortnightly basis. Check Centrelink for eligibility. Each session is calculated using the full service operational hours, not the hours attended by the child.



Unexpected changes to activities

In the unlikely event that an activity is unable to run, an alternative activity will be provided.

Activities and times are subject to change due to unforeseen circumstances such as severe weather or provider availability. If an alternative cannot be sourced we will update your invoice to reflect this.



Serious stuff!

Medical Management Plan & Medication

All children who have been diagnosed with a medical condition including allergies, food/chemical intolerances, anaphylaxis, asthma, epilepsy will need to provide:

- a completed Medical Management Plan with a colour photo
- necessary medication

Please note it is a legal requirement under the Education & Care National Regulations and the Terms and Conditions for booking that these are provided.

In the interests of child safety, care may be refused on the day should the appropriate documentation or medication or medication not be supplied.



Changes to your booking

Simply log into your account anytime to make the relevant changes or call us between 6:30am – 9:00pm weekdays on 1300 072 410.



Fees for changes to your booking

More than 5 days	Less than 5 days *	On the day
No Charge	\$10.00	Full Fee

*Less than 5 days from the start of the booking (120 hours from the start of the session).

When making additional bookings, the \$10.00 fee is eligible for the Child Care Subsidy, which means you may only need to pay the gap, depending on your families' circumstances.



 **If you have any questions, please speak with one of our friendly Educators or call Customer Support on 1300 072 410.**

With the maximum CHILD CARE SUBSIDY. **Without the CHILD CARE SUBSIDY.

There are 2 types of Child Care Payments.

1. Child Care Subsidy

The amount you can get depends on:

- 1 your family's income
- 2 the type of childcare you use
- 3 the age of your child
- 4 the hours of recognised activities you and your partner do

2. Additional Child Care Subsidy

This is extra support for some families including:

- 1 grandparents / great grandparents
- 2 families moving from an income support payment to work
- 3 those experiencing temporary hardship

Claim these subsidies via myGov

Up to **90%** of child care costs can be covered by Child Care Subsidy!



For more information, call Theircare on 1300 072 410

Excursion & Super Excursions days: Arrive at the service by 9:00 am. Pick-up after 2:30 pm. Wear runners & socks.

- Excursion
- Super Excursion
- Special Activities
- In-house Fun
- Public Holiday

MONDAY	TUESDAY	WEDNESDAY	THURSDAY	FRIDAY
1 APR Public Holidays! <small>NO SERVICES</small>	2 APR Make it Messy! Enhance your messy and creative side! Anything goes with the Anything but a Paintbrush challenge as you create works of art, but no paintbrushes allowed! unleash your creativity and create amazing Day Nature Prints, Symmetry Painting, Straw Face Painting and take part in a Fruit Basket Group Game!	3 APR Spotlight Spectacular Step into the spotlight with this showtime spectacle! Get your groove on with a Dance Party inspired by the TikTok dances! But the fun begins when... Play the partriches: allowed! unleash your creativity and create amazing Day Nature Prints, Symmetry Painting, Straw Face Painting and take part in a Fruit Basket Group Game!	4 APR Fizztastic Adventure Get ready for a fizzy adventure with the UV Lemonade Stand! Little builders will create their own Lemonade Shop and even design their own cup for yummy drinks. Then, let's dive into nature with an Autumn Flower Wreath craft and Nature Print Scavenger Hunt. It's a sweet blend of crafting and outdoor exploration for endless fun!	5 APR Playground Wonderland Get ready for the best indoor playground adventure ever! Scale the heights of the multi-level playground, bow the slides, and conquer adventures obstacles and then take a multi-level ball pit. Keep the fun going with Block 'n Roll Musical Shapes, the Wiggly Grounder group game and craft Popable Stick Puppets.
8 APR Putt-Tastic Adventure Get hyped for a mini-golf adventure like no other! Journey through the twists and turns of the mini-golf course, test your skills with the Lego Mini Golf Course Challenge. Then, let's take on the Paper Chains challenge - explore sensory fun with Crafting Colours, and express artistic flair with Button Tree Art!	9 APR Marbled Pencil Case Get hyped for a day of colourful creations and fun! Create stunning DIY marbled pencil cases with a touch of artistic flair that you get to take home! Add a dash of colour to the streets with Silereak chalk art! Finally, challenge yourself with Outdoor Sponge Toss Game and Pass the Water Challenge.	10 APR Movie Magic This autumn, for the first time in almost a decade, comedy icon Jack Black returns to the role as Po, the world's most unlikely kung fu master, with a hilarious, butt-kicking new chapter in DreamWorks Animation's beloved action-adventure franchise: Kung Fu Panda 4.	11 APR ArtBlast Galaxxy We are ready for Art-well! Launch your creativity into the stars and create unique galaxies with Paint Rocks, dive into cosmos with Galaxy Cook, and tackle Whisk to Win, if Art Challenges. Engineer wonders with LEGO STEAM Construction, fold truck into every corner with Origami! Lucky Stars.	12 APR Culinary Canvases Bon Appetite! Join us for a food festivity delight as we craft, create and engage food art, starting with Pizza Portraits, play S'ly Bananae Group Game, and create delightful edible art with Eat the Rainbow Fruit Salad. Then join in for Pimping Finger Painting and making Clay Omelette and People!
From as low as \$11.34* Full fee \$163.49**	From as low as \$27.88* Full fee \$71.88**	From as low as \$17.8* Full fee \$71.88**	From as low as \$9.10* Full fee \$90.05**	From as low as \$11.34* Full fee \$113.49**